



LOWER GROUND

2,173 SQ FT / 201.9 SQ M



- 21 x Desks
- 1 x Teapoint
- 3 x Breakout spaces
- 1 x 6-person meeting room
- 1 x 8-person meeting room
- 1 x Phone booth
- 1 x End-of-trip facilities
- 21 x Lockers

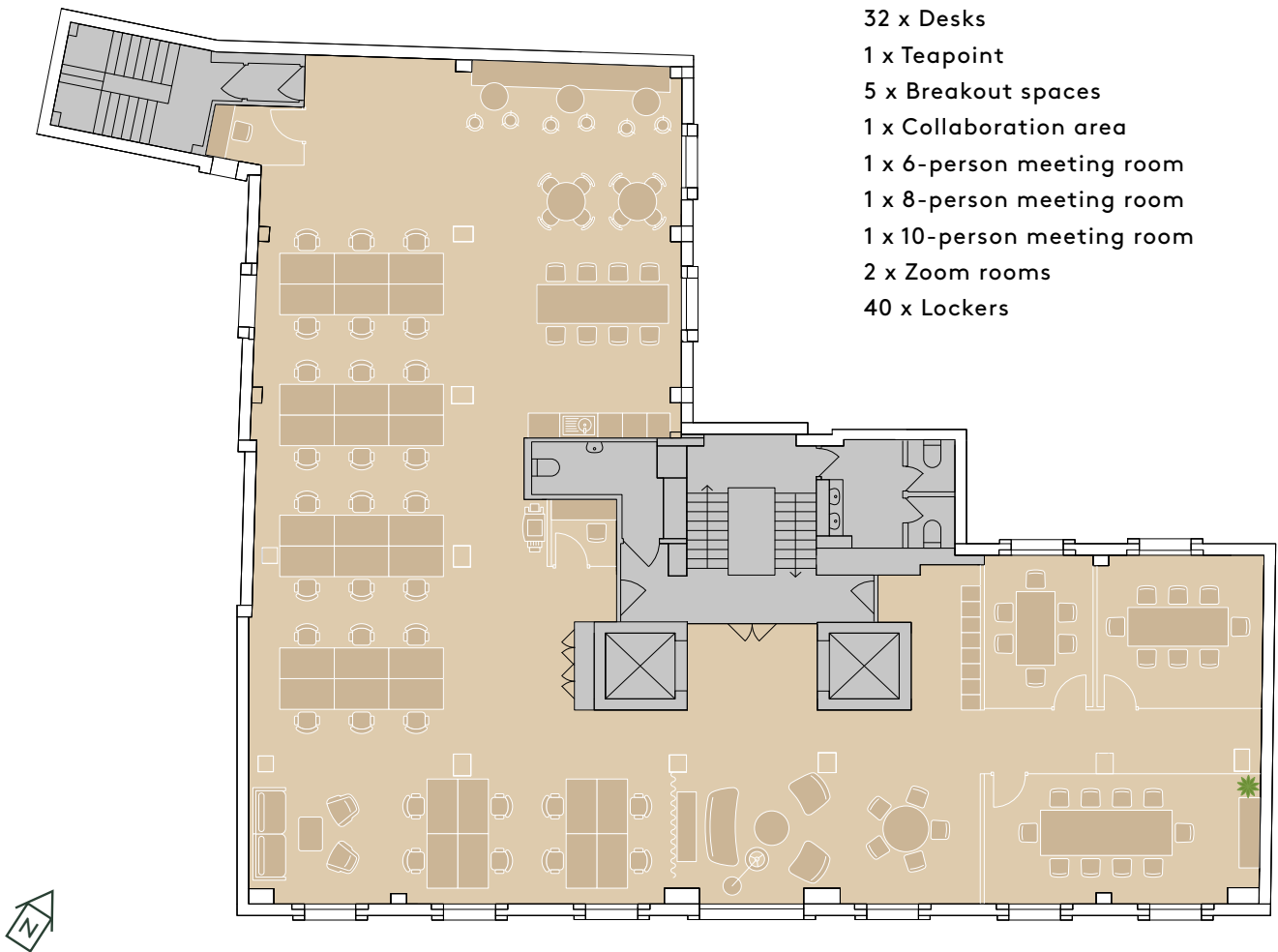
CHANDOS PLACE

■ Office space ■ Core ■ Showers ■ Lockers & bike racks ■ Lightwell



3RD FLOOR

3,485 SQ FT / 323.8 SQ M



- 32 x Desks
- 1 x Teapoint
- 5 x Breakout spaces
- 1 x Collaboration area
- 1 x 6-person meeting room
- 1 x 8-person meeting room
- 1 x 10-person meeting room
- 2 x Zoom rooms
- 40 x Lockers

CHANDOS PLACE

■ Office space ■ Core